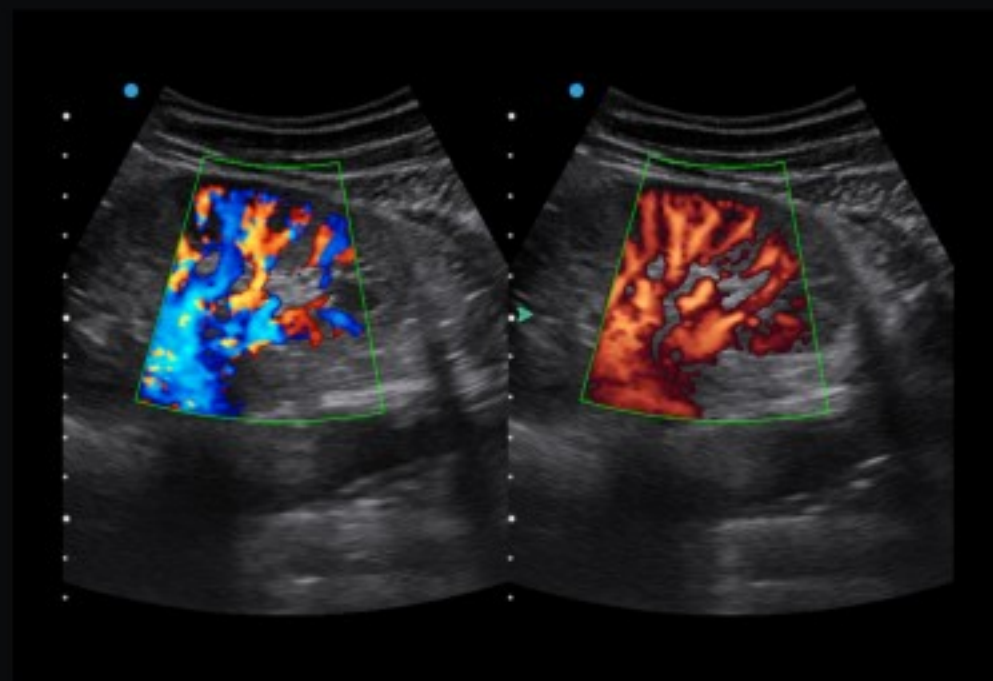


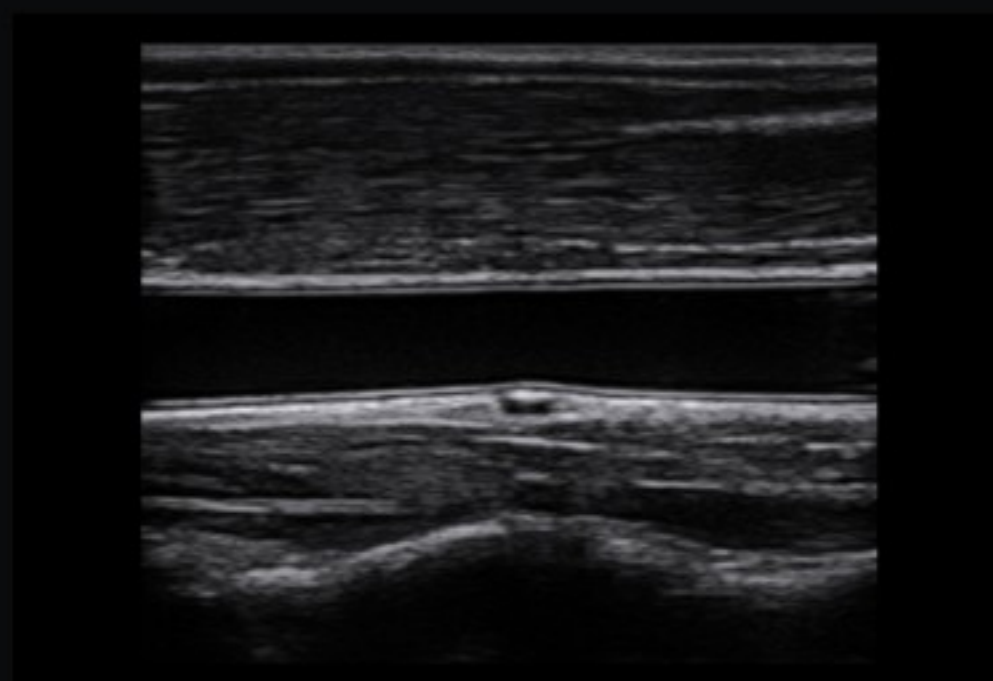
Image Gallery



Kidney



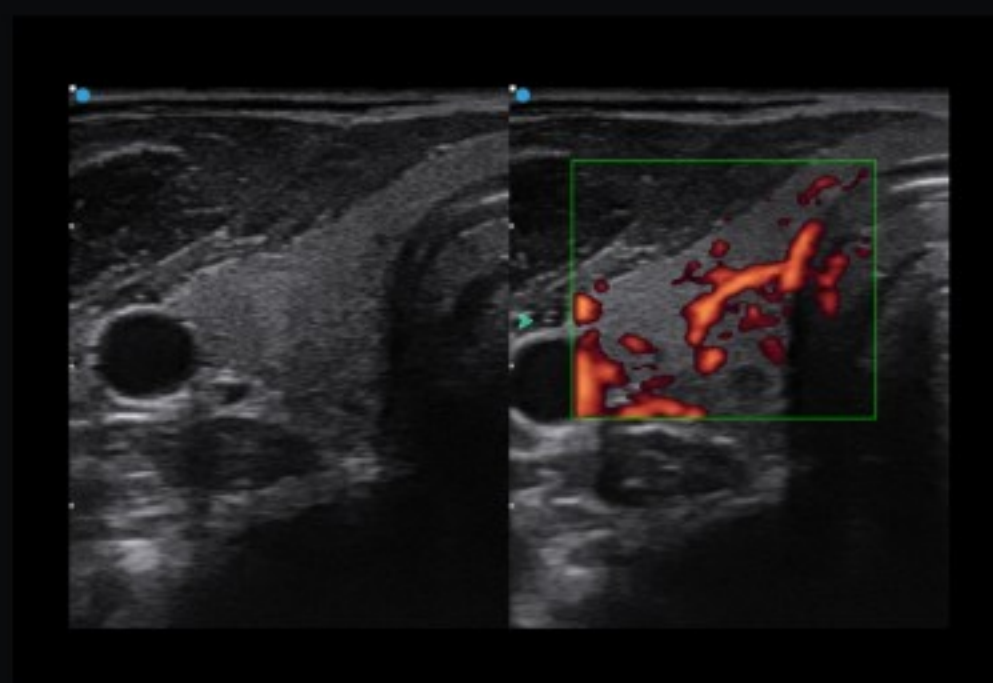
Prostate



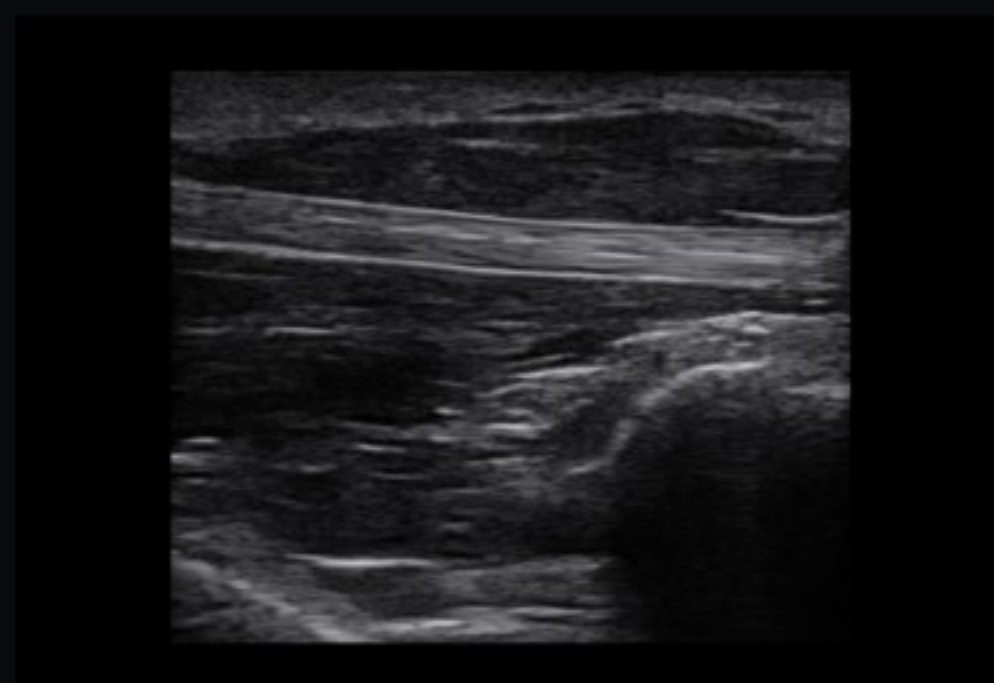
Carotid



PW



Thyroid CPA



Nanoview

Apogee 2100

AFFORDABLE VERSATILITY



SIUI

See the future
SIUI

Shantou Institute of Ultrasonic Instruments Co., Ltd.

HEADQUARTERS:

Shantou Institute of Ultrasonic Instruments Co., Ltd.
 Add: No.77, Jinsha Road, Shantou 515041 Guangdong, China
 Tel: 86-754-8825 0150 Fax: 86-754-8825 1499
 E-mail: siui@siui.com

HONG KONG OFFICE:

Shantou Institute of Ultrasonic Instruments (HK) Co., Ltd.
 Add: Room 2101, Tung Chiu Commercial Center
 193 Lockhart Road, Wanchai, Hong Kong
 Tel: 852-2891 6722 Fax: 852-2891 6723

www.siui.com



© All rights reserved to SIUI 2019

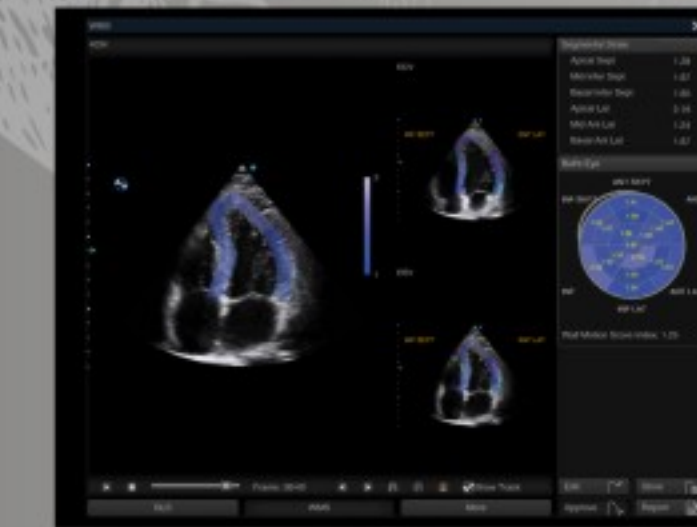
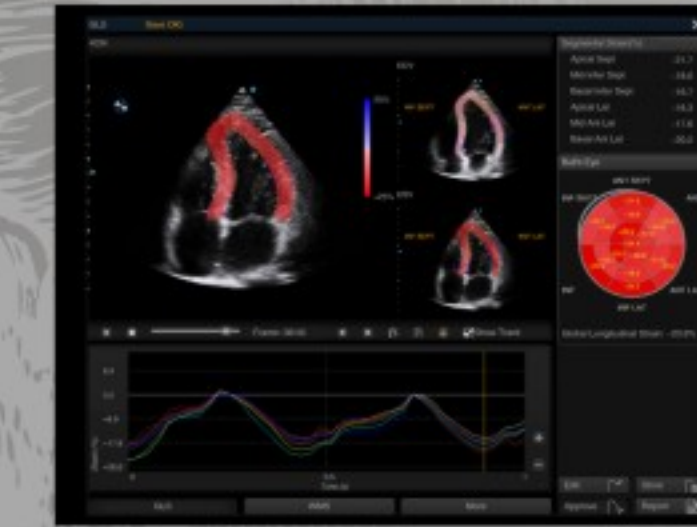
Apogee 2100/EN190729V3.1



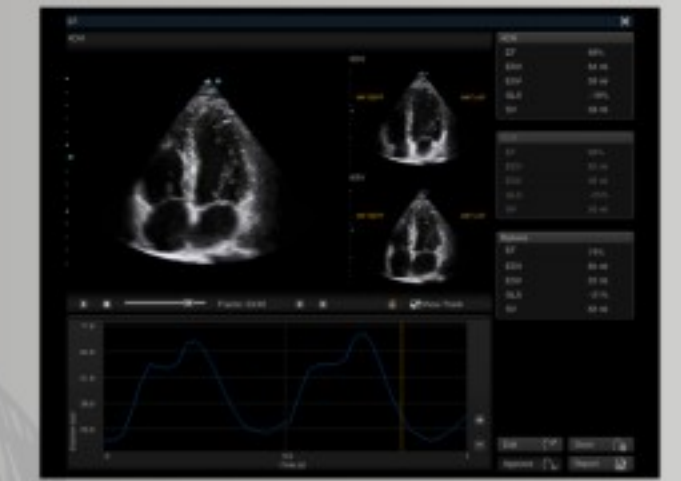
Diagnosis confidence comes from promising image quality and capability

Thanks to the advanced and continuously updated processing technology, the image performance of Apogee 2300 always keeps ranking in its class. The latest technology contributes to reliable image quality with higher resolution and optimized processing speed. All-round application packages render abundant clinical solutions. Rich probe groups empower all kinds diagnosis for general purpose.

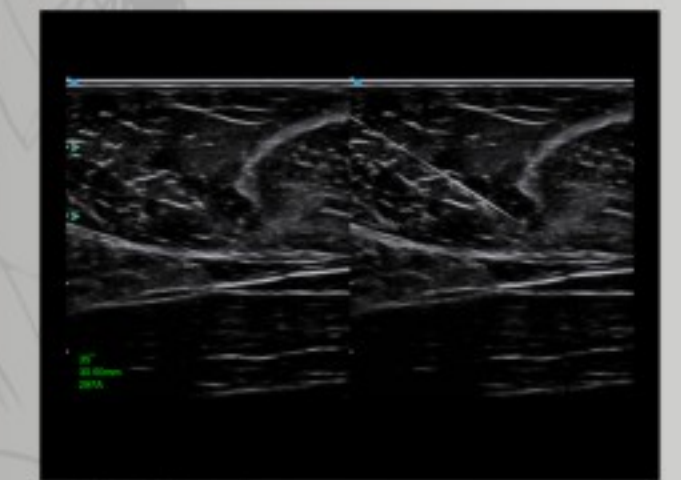
SIUI Auto SG is a quantitative assessment tool for global and segmental wall motion analysis based on cardiac strain imaging. It provides fully automated and reproducible results that allow clinicians to analyze and monitor subclinical changes over time.



SIUI Auto EF is a fully automatic measurement tool used to measure the Left Ventricle global Ejection Fraction.



Needle enhancement increases the needle visibility and enhances the needle tip, so as to offer the reliability and confidence to the clinicians.



User-friendly design and accessories refresh your exam experience

15-inch high resolution tilting monitor to accommodate your viewing preferences



Built-in light for keyboard and backlit control panel to comfort your eyes when scanning

Detachable lithium battery to facilitate your exam in power limit environment



Optional accessories to further extend your exam facility: trolley, probe extender, backpack, carry case etc.

Daily diagnosis relies on simple and smart workflow

- Smarchive enables to edit and transfer patients' information and images, available for remote diagnosis
- Complete and professional measurement package across applications fulfills different exam types
- User-defined setting allows customized your preferred measure items and their sequence
- Professional report system presents detailed and dedicated information according different exam types

IMAGE GALLERY

